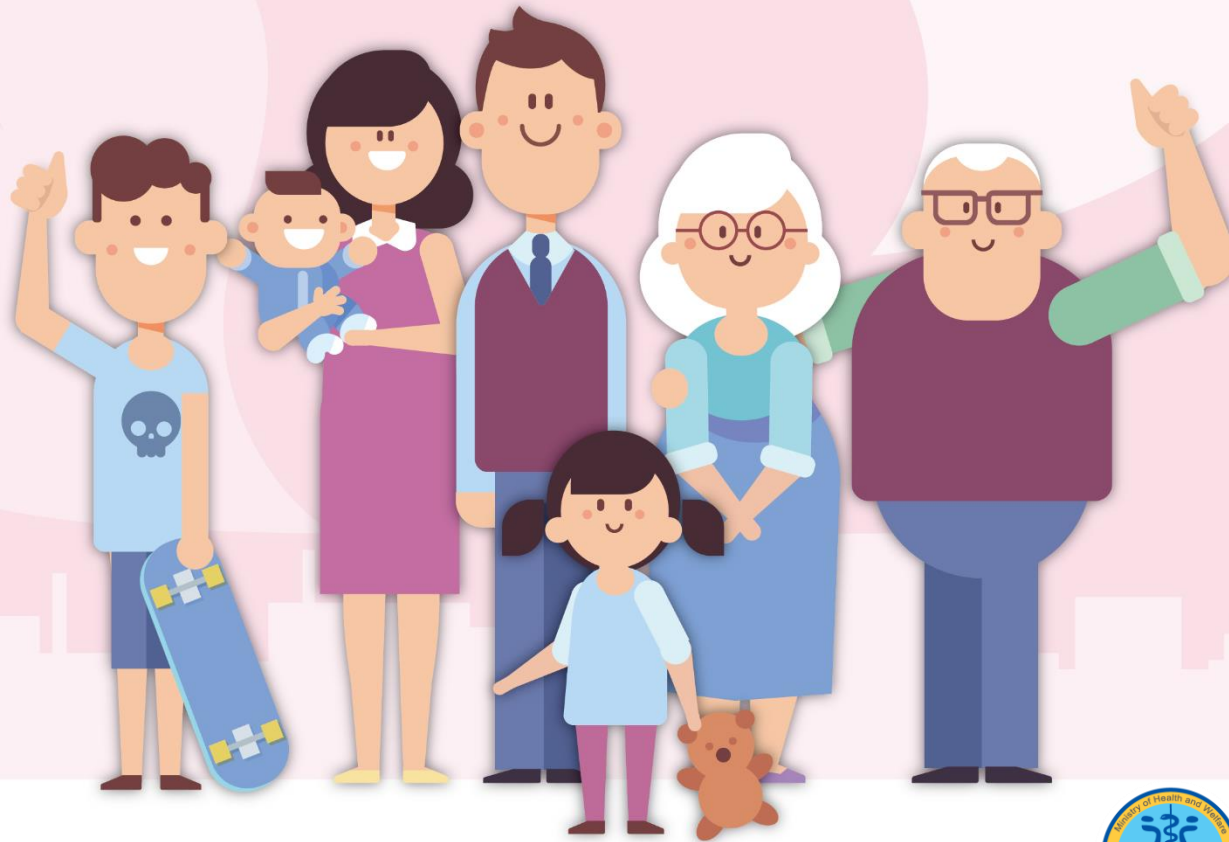


The MOHW's Administrative Achievements in 2018



衛生福利部
Ministry of Health and Welfare

Important MOHW Policy Implementation In 2018

Stable Society

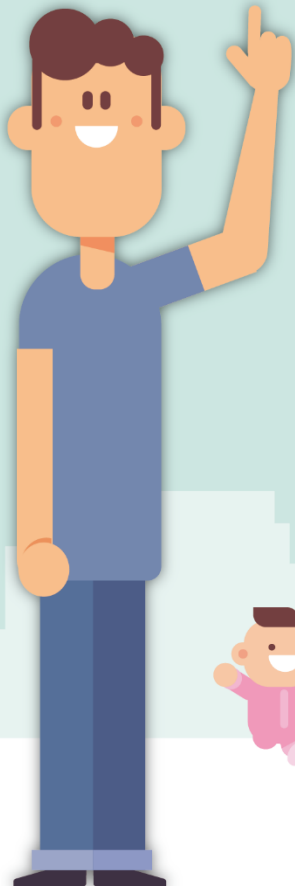
- ❑ Improving Social Safety Nets
- ❑ Building Friendly Environments for Families with Children
- ❑ National Ten-year Long-term Care Plan 2.0
- ❑ Food Safety Policy

Healthy Nationals

- ❑ Health Care Reform for a Healthy Nation
- ❑ Attaining Optimal Disease Control Standards
- ❑ Health Promotion

Technology

- ❑ New Southbound Policy
- ❑ Biotechnology Innovations Expand Biomedical Capacities
- ❑ Implementation Results and Future Plans

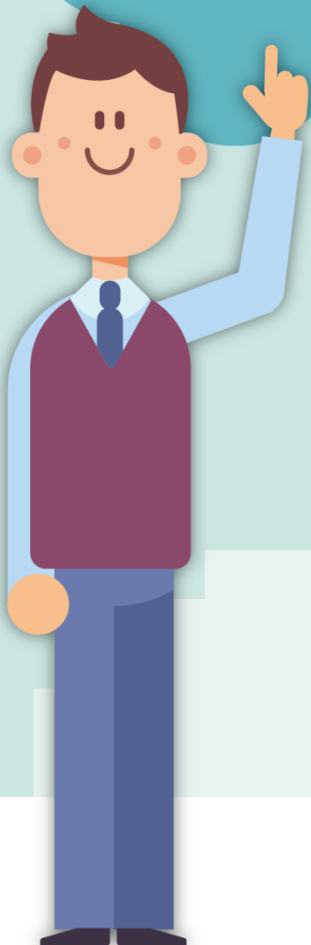


From the cradle to the grave, 4 issues we care most.

- ❑ Improving Social Safety Nets
- ❑ Building Friendly Environments for Families with Children
- ❑ National Ten-year Long-term Care Plan 2.0
- ❑ Food Safety Policy



Improving Social Safety Nets



Establishing a community-based protection system with family-centered integration services



1

Establish a widely distributed network of social welfare service centers, and integrate social services with welfare programs

2

Integrate sexual and domestic violence response services and high-risk households services

Strategies

3

Combine suicide-prevention services with psychiatric care

4

Integrate the service resources of multiple ministries and agencies



New Generation Anti-Drug Strategy:

Reducing addicts' drug demand and curbing the supply

Improving Social Safety Nets

Anti-Drug Monitoring

- To prevent importation of illicit drug raw materials in the name of the active pharmaceutical ingredients
- To advance detect emerging drug capability



Rehabilitation

- To develop comprehensive service model with Integrated Drug Abuse Medical Demonstration Centers
- Training intervention personnel, linking local resources, and promoting the service accessibility



Drug Prevention

- Strengthening public drug abuse awareness through multi-channel advocacy



Building Friendly Environments for Families with Children

1 Expanding Childcare Allowance

Monthly Subsidy

Average Households	Middle-Low-Income Households	Low-income Households	Three or More Children
2,500	4,000	5,000	1,000 additionally

Eligibility

- A parent who pays the individual income tax rate under 20%
- A parent who has not received any subsidy for parental leave without pay or public or quasi-public nursery service as of the application date

This policy has benefited more than **390 thousand** children under the age of 2.

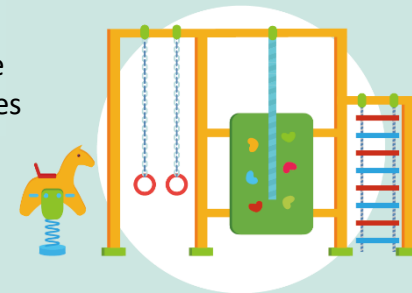
Welcome to call the **1957** hotline to get more information.



Building Friendly Environments for Families with Children

2 Continuing Public Child-Care Services

This measure is to set up public accessible, affordable nursery facilities such as community public care homes and baby-care centers to meet the nursery needs.



3 Establishing Quasi-Public Child-care Services

The government collaborates with child-care services agencies and baby-care centers via signed agreements to fill the parents' nursery economic gap.



To assist families to pay nursery expenses around 10% - 15% of the average disposable income

More than 75% of childcare providers and 91% of baby-care centers have signed up with the government.



National Ten-year Long-term Care Plan 2.0

Expanding New target groups

- ◆ The frail with mild disability over 65 years old
- ◆ Disabilities
- ◆ Indigenous people residing in plain counties between 55-64 years old
- ◆ Dementia patients over 50 years old

Extending service items

The new service items include upstream prevent to delay disability and downstream preparedness to provide discharge plan and hospice care.

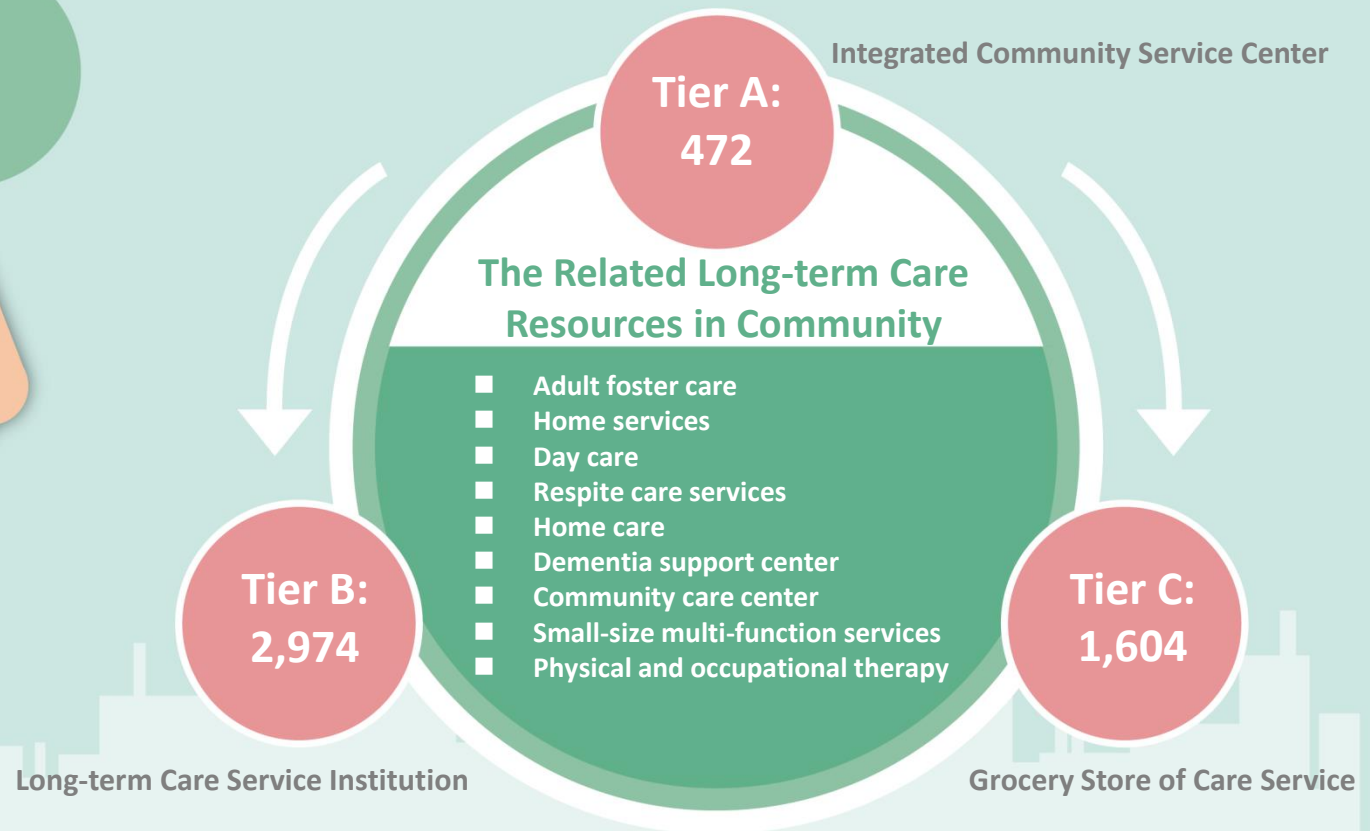
To simplify contracted procedure and refine reimbursement process

The number of eligible persons have grown by to over 700 thousand from 510 thousand.



National Ten-year Long-term Care Plan 2.0

The comprehensive community-based care service system



National Ten-year Long-term Care Plan 2.0

Preparedness and Delay Disability Program

The MOHW grants **2,213** contracting locations to hold preventive care intervention classes for different level of disabilities.

Taiwan Dementia Plan 2.0

We set up:

- **350** Supportive Centers
- **73** Integrated Dementia Care Centers
- **4** Dementia Friendly Demonstration Communities

Improving home-caregiving staff's working conditions by raising salaries

Monthly salary: > NT\$ 32,000
Hourly wage: > NT\$ 200.

Providing respite care services to family and foreign caregivers

The beneficiaries will be more than 25,000 individuals per year expectedly.



Food Safety Policy



Food Safety Policy



The Compliance Rates in 2018

Border food
inspection

98%

Domestically
produced food
on the market

96%

Imported food
on the market

98%

Visit TFDA's
website

Rumor Clarification

Rumor Buster Bulletin

Advertisement Clarification Bulletin



衛生福利部

Ministry of Health and Welfare

Health and Welfare Direct Hotlines

Protection Hotline
113

Male-Care Hotline
0800-013-999

Suicide Prevention Hotline
1925

Welfare Hotline
1957

Food Safety Hotline
1919

Epidemic Notification Hotline
1922

National Health Insurance Hotline
0800-030-598

Long-term Care Hotline
1966

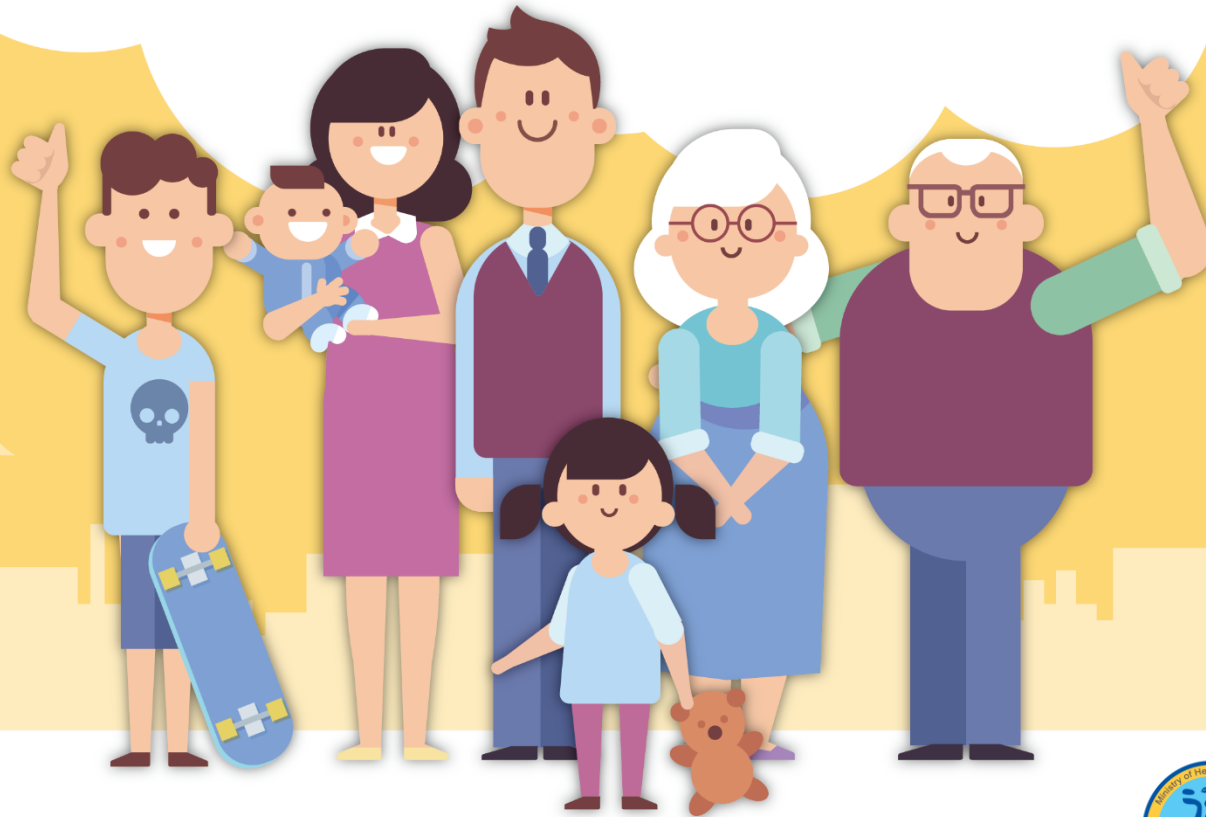
Taiwan Smokers' Helpline
0800-636-363
Pregnant Woman Care Hotline
0800-870-870

Food and drugs rumor clarification information can be founded at TFDA's website (Rumor Buster Bulletin and Advertisement Clarification Bulletin).



衛生福利部
Ministry of Health and Welfare

Promote the Health and Well-Being of All Citizens



衛生福利部

Ministry of Health and Welfare